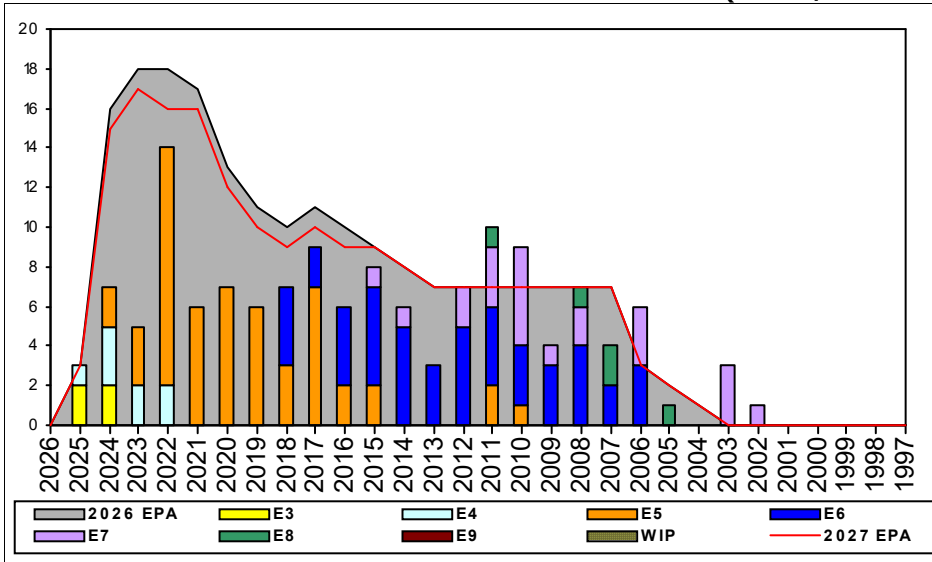


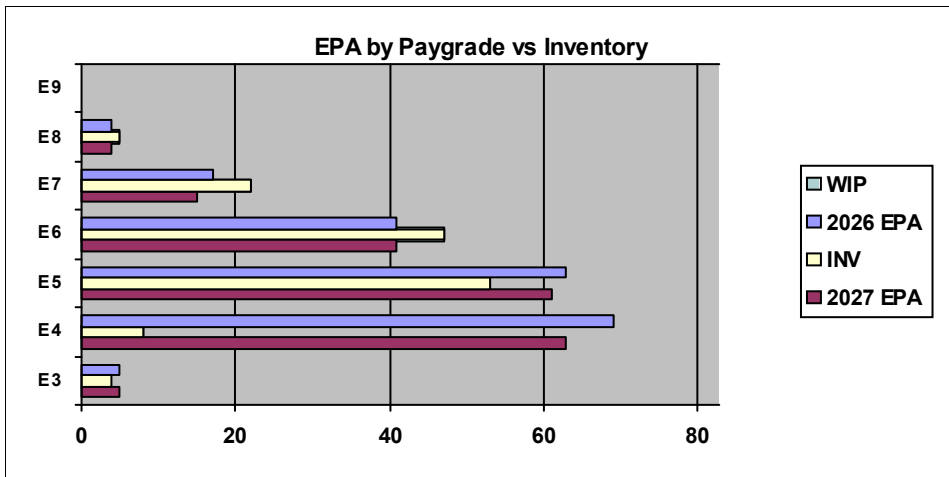
CTI (Latin/South America) - B515



Sea Shore Flow		
TOUR	SEA	SHORE
1ST		
2ND		
3RD		
4TH		
5TH		
6TH		
7TH		

FORCE STRUCTURE MANNING TO BA										
PG	SEA	INV	BA	SHORE	INV	BA	SEA + SHORE	TOTAL INV	TOTAL BA	
E1-3	0.0%		4	#Div/0!	1		25.0%	1	4	
E4	0.0%		9	14.3%	8	56	12.3%	8	65	
E5	137.5%	11	8	78.3%	36	46	87.0%	47	54	
E6	150.0%	9	6	109.1%	36	33	115.4%	45	39	
E7	75.0%	3	4	158.3%	19	12	137.5%	22	16	
E8				125.0%	5	4	125.0%	5	4	
E9										
Total	74.2%	23	31	69.5%	105	151	70.3%	128	182	

TIS to PG Years	Pay Grade	E1-E3	E4	E5	E6	E7	E8	E9
TIG to PG Years	CTI	TIS	2.1	4.5	8.2	13.4	15.4	
	ALL Navy	TIG	1.3	1.8	4.6	5.7	5.0	4.6
	CTI	TIG	1.7	2.8	4.3	6.6	3.8	



Zone Info	ZONE A	ZONE B	ZONE C	ZONE D	ZONE E	ALL ZONES
FY26 Manning:	53.0%	60.0%	71.0%	105.0%	100.0%	70.0%
FYTD RENL Rate:	45.0%	66.7%	66.7%	100.0%	100.0%	62.1%

NOTES

SPANISH ***ZONE A/B/C SRB available!*** Please take advantage.

Billets are being coded for INT/ADV NECs, recommend updating your MNA searches and reaching out to the detailers for further information.

Rating conversions will be considered on a case-by-case basis.

The TECHAD is available at 901-874-2653 for questions.

	E1-3	E4	E5	E6	E7	E8	E9	TOTAL
% INV to FY26 EPA	80%	12%	84%	115%	129%	125%		70%
EPA (FY26)	5	69	63	41	17	4		199
INVENTORY	4	8	53	47	22	5		139
EPA (FY27)	5	63	61	41	15	4		189
% INV to FY27 EPA	80%	13%	87%	115%	147%	125%		74%
INV +WIP / FY26 EPA								
INVENTORY			← E-3 and Below WIP					
INV +WIP / FY26 EPA								